

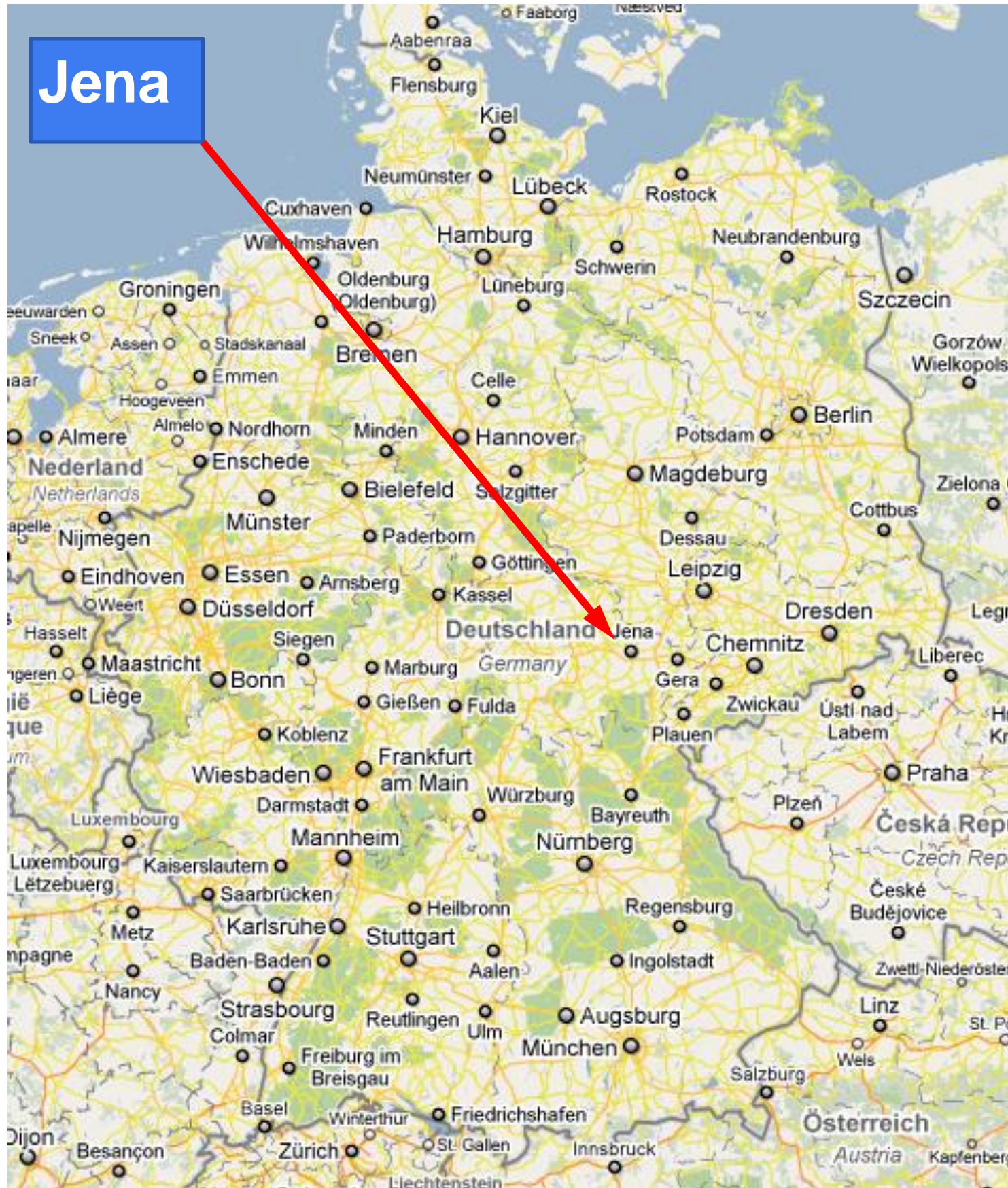
# Technical and MC Meeting 18. – 20. September 2017

Introduction Jena and Leibniz IPHT

Contact: [kay.schuster@ipht-jena.de](mailto:kay.schuster@ipht-jena.de)  
[kay.schuster@leibniz-ipht.de](mailto:kay.schuster@leibniz-ipht.de)



Jena

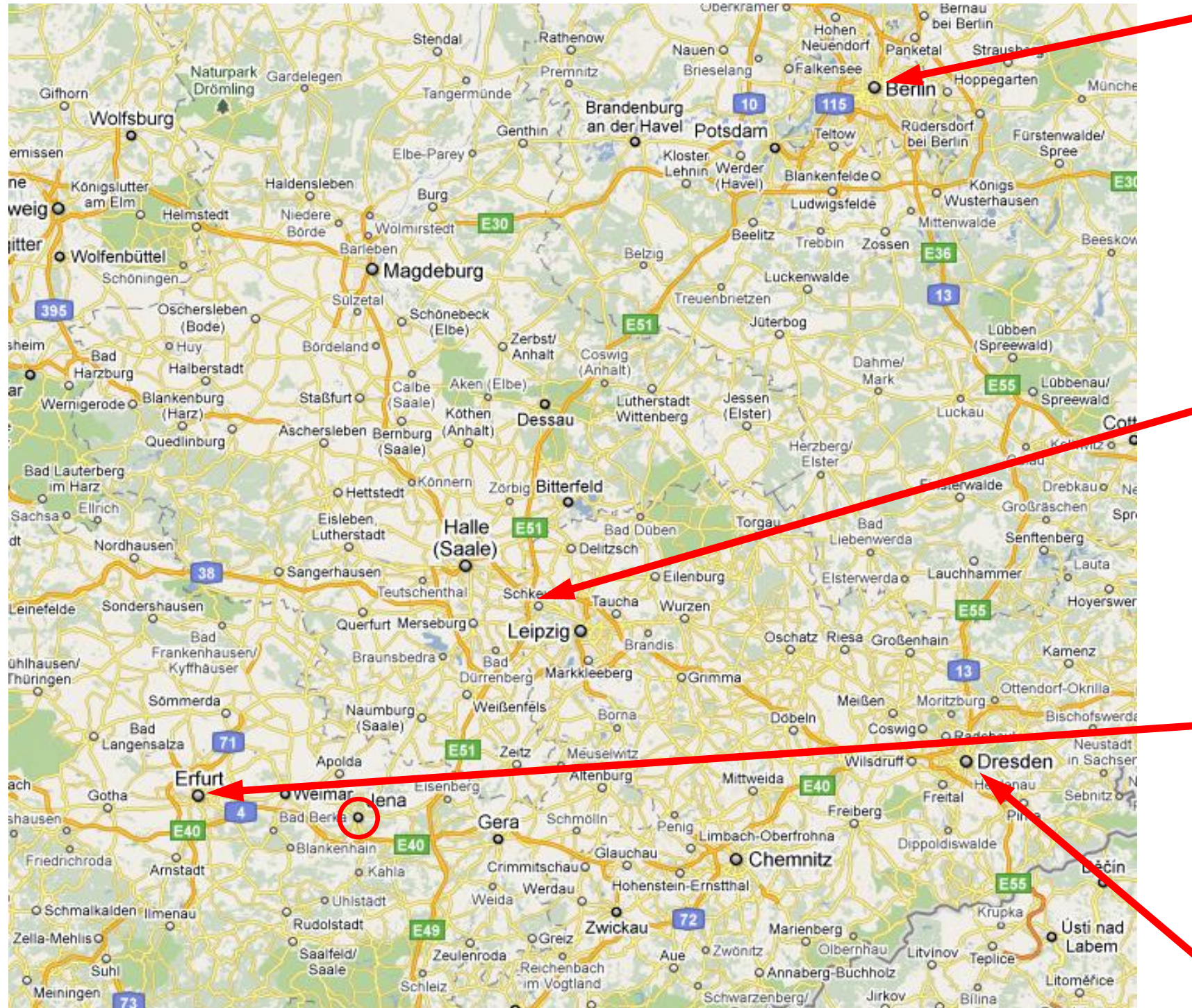


## Key figures

- $50^{\circ}55'34.9''$  northern latitude,  
 $11^{\circ}35'3.3''$  eastern longitude  
Height: 155 m above sea level
- North-south: 14.7 km (max.)  
East-west: 12.2 km (max.)  
Area: 11.447,3 ha
- Population: ca. 105000
- Friedrich-Schiller-University  
ca. 20000 Students
- University of Applied Science  
ca. 5000 Students
- Carl Zeiss GmbH
- Schott Glass
- Jenoptik AG



# Airports „close“ to Jena



## Berlin

- Schönefeld
- Tegel

2.5 h travel by train (ICE) from Berlin mainstation to Jena Paradies

## Leipzig-Halle

Travel by local train to Leipzig mainstation, then 1 h train (ICE) to Jena Paradies

Travel by train via Halle/Saale to Jena Paradies

## Erfurt

Travel by local train ~30 min to Jena West

## Dresden

2.5 – 3.0 h travel by train via Leipzig to Jena Paradies

Airport Frankfurt (Main) is 3 hours far from Jena (by train or by car)



# Connections to IPHT – Car



From Berlin Highway A9 direction München (Munich) to Hermsdorfer Kreuz (~200 km) than Highway A4 direction Frankfurt / M 20 km exit Jena Zentrum

# Distances

Weimar	- 20 km
Erfurt	- 45 km
Eisenach	- 100 km
Leipzig	- 100 km
Dresden	- 190 km
Nürnberg	- 220 km
Berlin	- 250 km
Hannover	- 280 km
Frankfurt/Main	- 310 km
München	- 380 km
Stuttgart	- 380 km
Hamburg	- 400 km
Köln	- 420 km
Wien	- 580 km
Zürich	- 590 km



# Recommendable Hotels in Jena (Downtown)

Hotel Schwarzer Bär



Gasthof Zur Noll

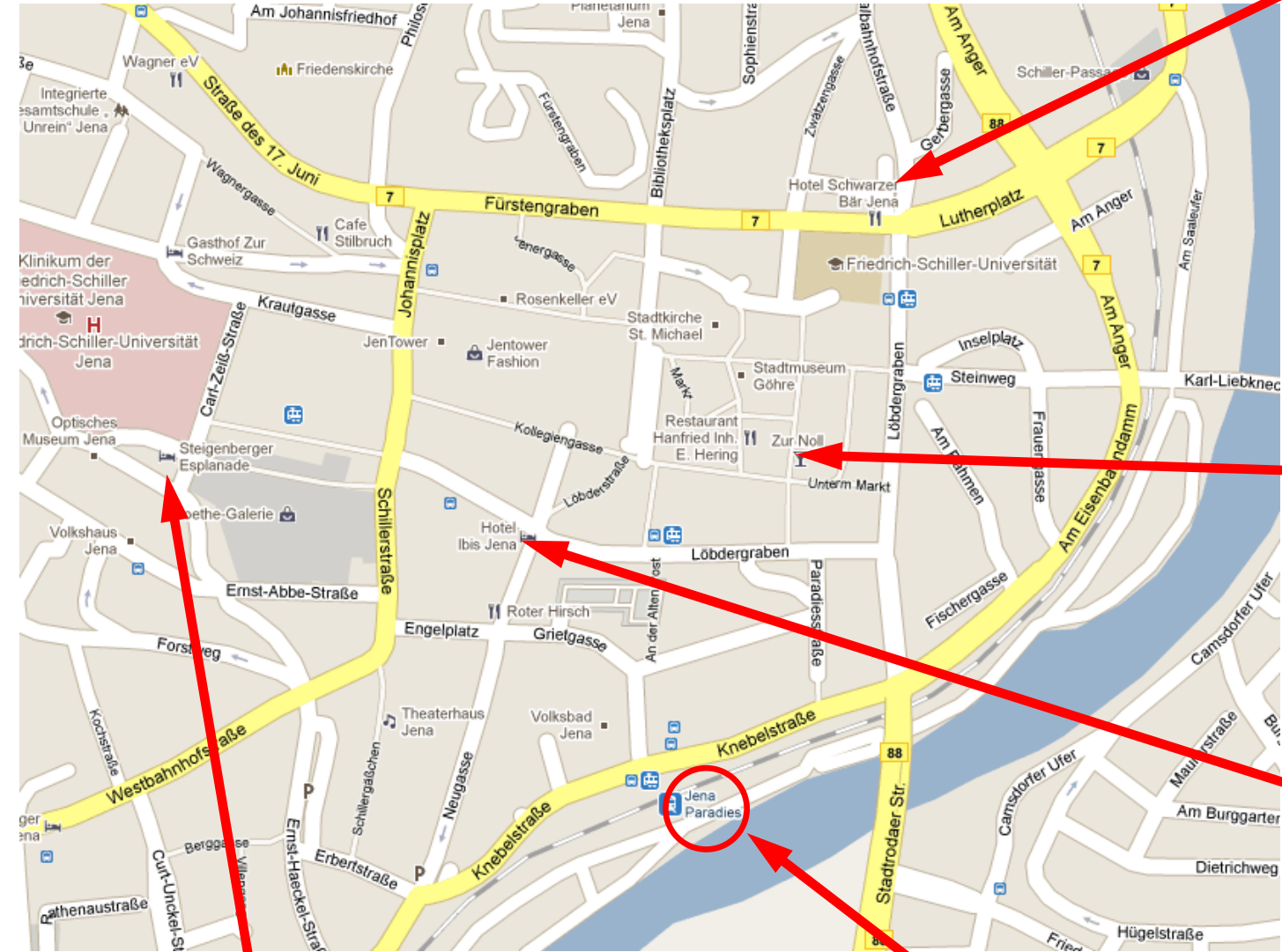


IBIS Hotel



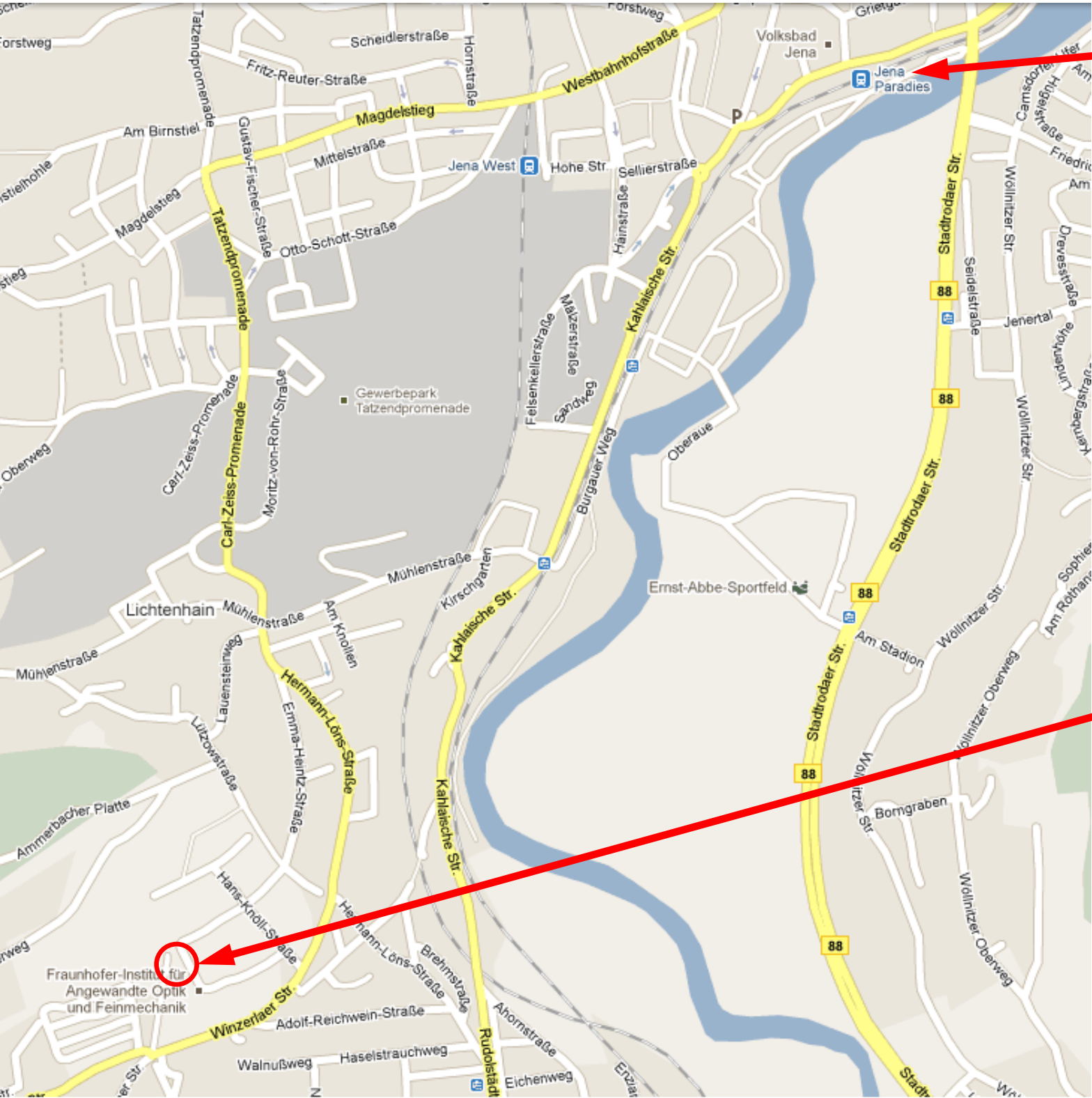
Let me know, if you need more recommendations!

Train station Jena Paradies

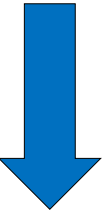


Hotel Steigenberger Esplanade

# Connections to IPHT – Train – Bus / Taxi



Train station Jena Paradies



3 km Public Transportation



IPHT  
Albert-Einstein-Str. 9



Jena





# Jena



**Shopping center  
“Goethe Galerie”**



**Market place**



**Zeiss Planetarium**



# Beutenberg Campus Jena

- 1 + 2** Max-Planck-Institutes
- 3** Start-up companies
- 4** Institute of Applied Physics
- 5** Institute for Biology
- 6** Fraunhofer-Institute for Applied Optics and Precision Mechanics
- 7** Leibniz-Institute for Natural Product Research and Infection Biology
- 8** Leibniz Institute for Photonic Technology (IPHT)
- 9** Leibniz-Institute for Age Research
- 10** Campus Head Quarter
- 11** Wacker Biotech GmbH
- 12** Start-up companies





# Leibniz Institute of Photonic Technology





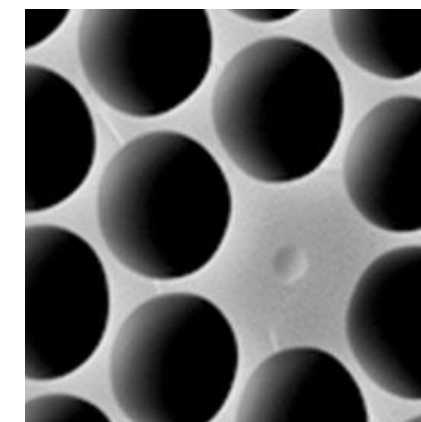
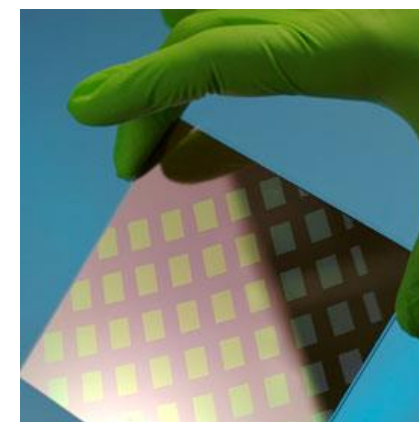
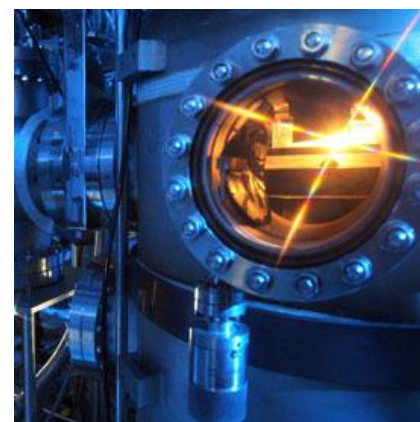
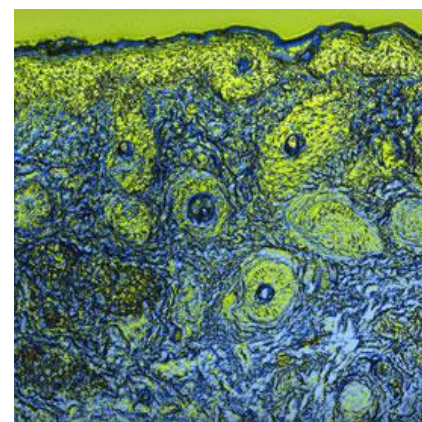
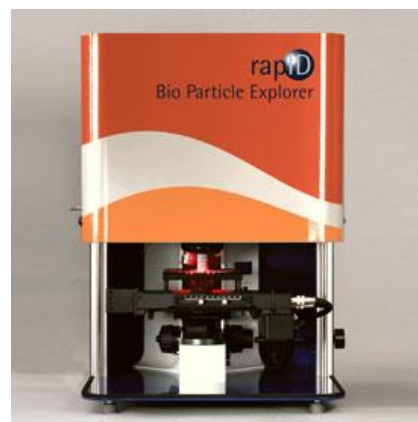
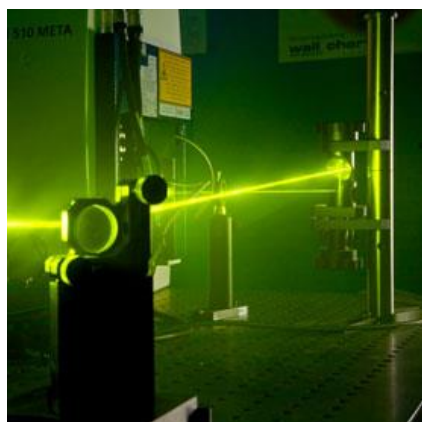
# The Meeting

- The technical meeting will take place on 18. and 19. September
- The travelling is therefore foreseen for Sunday 17. September
- The MC meeting is planned for ½ day 20. September

## The Accommodation

- Hotels are recommended on slide 6.
- Flat rates or reduced prices are not yet negotiated. I will work on this!
- Other hotels a bit more far from downtown are also available.





# Welcome to Jena in autumn 2017

